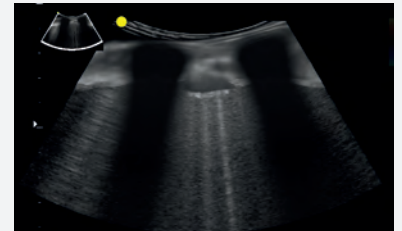
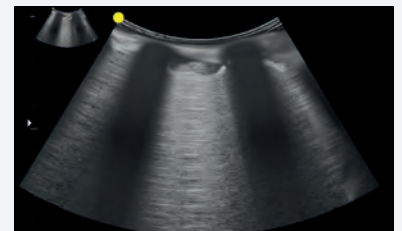
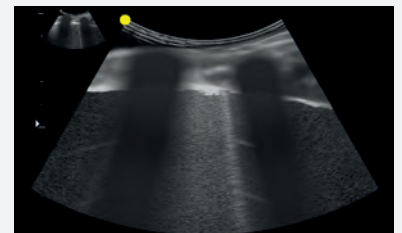
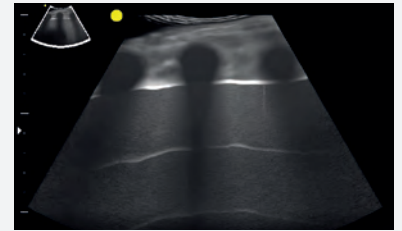


In order to continue to contribute to the fight against the global pandemic, we have expanded our **COVID-19 lung ultrasound training module** to include **cardiac** and more lung cases. The updated module now includes five cases, beginning with an improved normal lung and progressing through four examples of increased lung pathologies associated with COVID-19.

- New improved normal lung
- COVID-19 example 1 – increased B-lines and thickened irregular pleura
- COVID-19 example 2 – small bilateral consolidation
- COVID-19 example 3 – extensive small bilateral consolidation
- COVID-19 example 4 – large consolidation in the right lung

The updated COVID-19 module is also now available in the Active Scenario mode of the BodyWorks platform, which allows instructors to combine the COVID-19 lung pathologies with multiple cardiac pathologies (**hypovolemia, RV failure, and pulmonary embolism**). This will allow learners to practice numerous possible lung and cardiac combined scenarios that they may see in clinical practice, and to change these scenarios instantly.



BodyWorks Eve is an ultra realistic female patient simulator designed for interactive Point of Care Ultrasound (PoCUS) scenario training.

Complete with over 100 real patient scans and over 10,000 pathology variations across cardiac, lung, transabdominal and pelvic ultrasound, BodyWorks Eve is designed to meet the training needs of healthcare professionals who wish to practise PoCUS in Emergency Medicine and Critical Care.

For more information please contact us at
hello@intelligentultrasound.com
or contact your local BodyWorks representative.